

Datasheet

USB Type-C LRD Active Cable Test Fixture



TFU-49R2U
USB Type-C LRD Active Cable Test Fixture

Introduction

This product is USB Type-C LRD Active Cable Test Fixture. This product specification is compatible with: USB Type-C LRD Active Cable Test.

Key Features

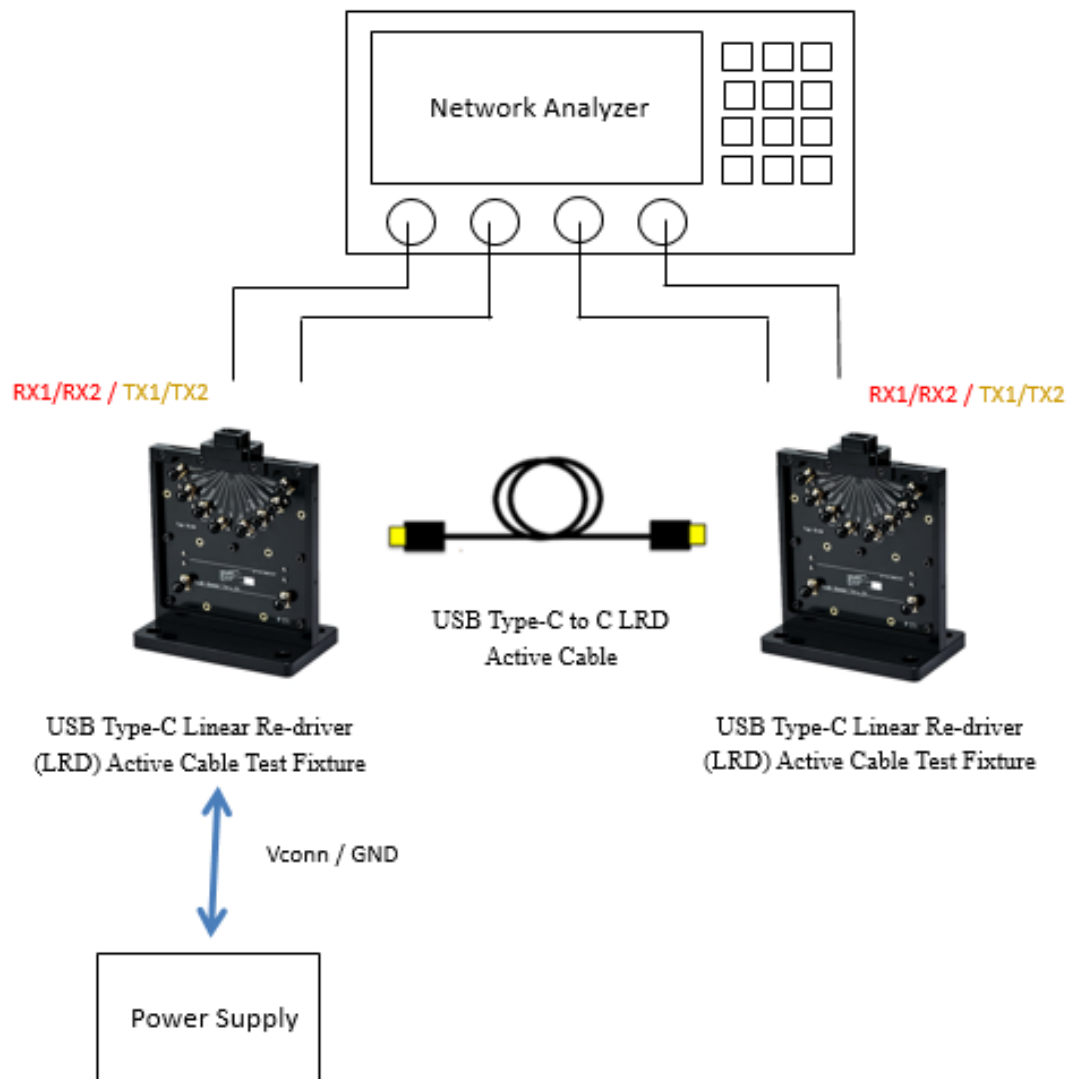
- High performance test fixture supporting up to 20Gbps.
- Special designed Vconn and Vbus SMA connector to provide power for LRD active cable.
- Robust design for ease of testing USB Type-C LRD Active Cable.
- Support USB4 LRD compliance test.
- Compatible with major test equipment brand such as Keysight, Tektronix, Teledyne LeCroy.

Applications

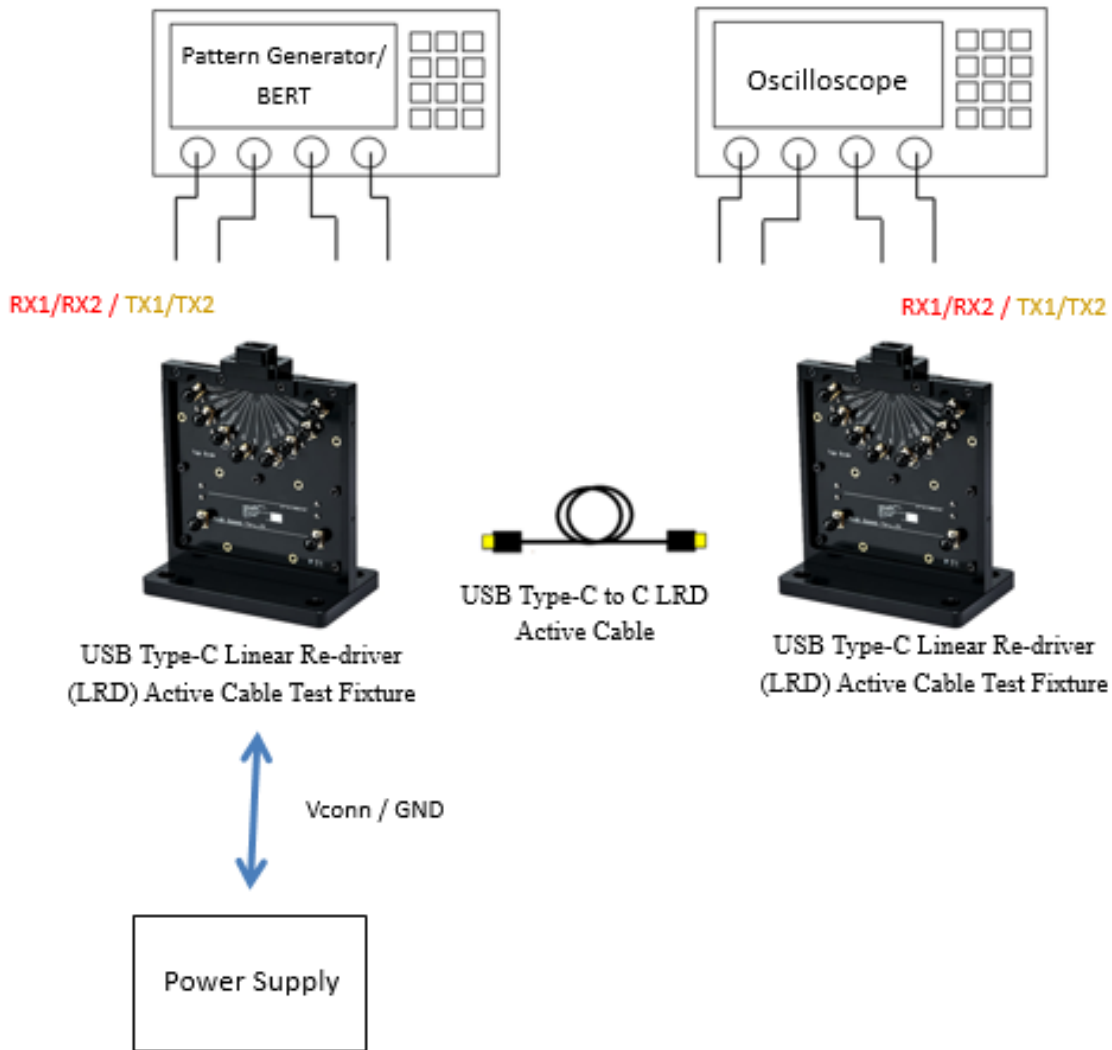
- USB Type-C LRD Active Cable Frequency Domain testing please see “**USB Type-C LRD Active Cable Frequency Domain Test Setup**” below.
- USB Type-C LRD Active Cable Time Domain testing please see “**USB Type-C LRD Active Cable Eye Diagram Calibration and Test Setup**” below.

Test setup includes but not limited to the following examples:

USB Type-C LRD Active Cable Frequency Domain Test Setup



USB Type-C LRD Active Cable Eye Diagram Calibration and Test Setup



Note: Other ISI board may be required in calibration setup according to different CTS.

For more in depth test procedures, please refer to Compliance Test Specifications listed below.

Reference USB LRD Specification

1. Universal Serial Bus 4 (USB Type-C) Router Assembly Electrical Compliance Test Specification Rev. 0.96
2. Electrical Compliance Test Specification Linear Re-Driver Active Cable (LRD) Rev. 0.7

Contact Information