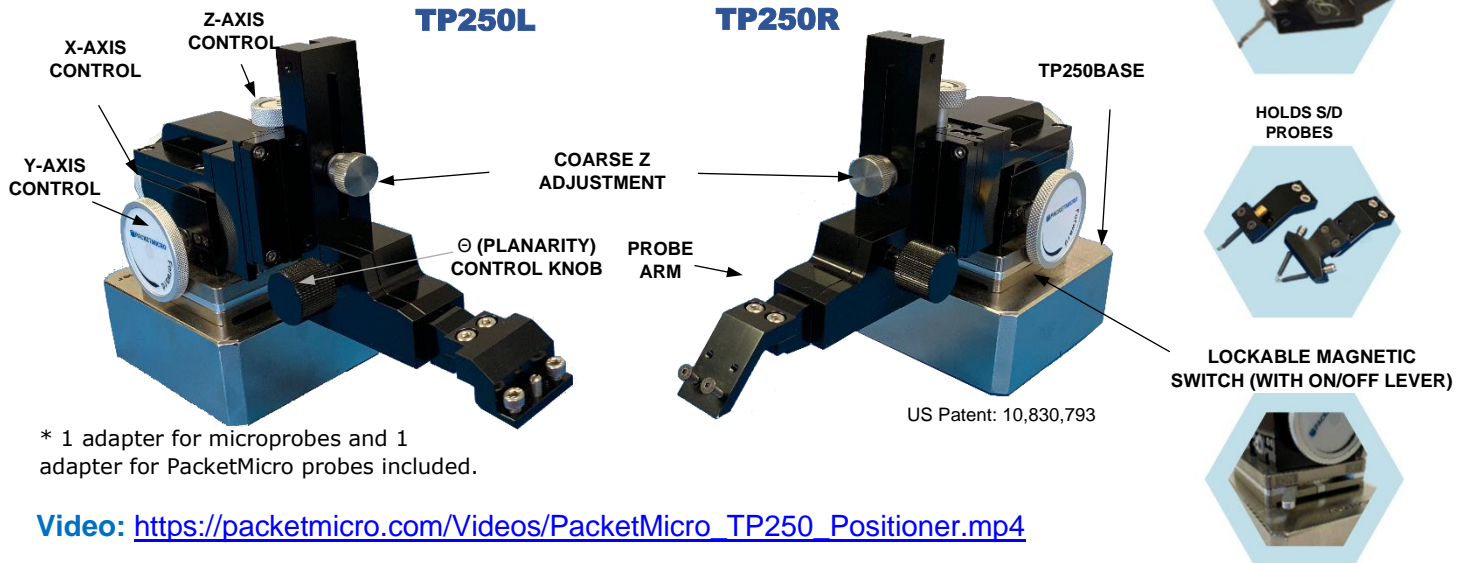


PRECISION POSITIONER TP250

THE VERSATILE, HIGH-PRECISION POSITIONER



* 1 adapter for microprobes and 1 adapter for PacketMicro probes included.

Video: https://packetmicro.com/Videos/PacketMicro_TP250_Positioner.mp4

TP250 probe positioner can be used in all PacketMicro Do-It-Yourself (DIY) horizontal and vertical probe stations. Its high-precision XYZ stage with magnetic lock at the base and long probe arm with θ control make it ideal for probing with microprobes and rugged PacketMicro probes in a wide range of RF and signal-integrity measurements. TP250 has patented planarity (θ) control mechanism, which does not use the typical spring-loaded design, to avoid potential damage to the test probe mounted on its probe adapter. The extra-large control knobs for XY axes ensure smooth, fast placement of the test probe.

- Rugged, ergonomic design
- Easy, quick rearrangement of positioner with a lockable magnetic switch
- Coarse probe arm height movement without tool
- High-quality material and precision design ensure accurate and repeatable measurements
- Adapters for holding typical microprobes, PacketMicro's rugged probes, and scope probes
- Special 90° arms for different probing orientations
- Work with all PacketMicro horizontal and vertical probe fixtures

SPECIFICATIONS		TP250	TP250 Base	
XYZ-axis travel:	16 mm with 500 $\mu\text{m}/\text{turn}$ (50 TPI), x/y-axis control knobs		Mounting	Metal with magnets & rubber
Resolution	5 μm			
Height coarse adjustment:	5 mm/step (14 steps)		Dimensions	4"x3"x1.5" in.
θ (Planarity) control:	$\pm 10^\circ$ with $2.5^\circ/\text{turn}$ and 0.025° resolution			
Dimensions/Weight	(LxWxH) 228x76x108 mm, 9x3x4.3 in./ 2.86 lb. (1.3kg)		Weight	2.3 kg (5 lb.)

PART NUMBERS	
TP250L	Precision Positioner with XYZ θ control (left-handed), 2.3 kg (5 lb.)
TP250LB	Precision Positioner with XYZ θ control (left-handed) with base, 3.63 kg (8 lb.)
TP250R	Precision Positioner with XYZ θ control (right-handed), 2.3 kg (5 lb.)
TP250RB	Precision Positioner with XYZ θ control (right-handed) with base, 3.63 kg (8 lb.)
TP250-ARM-AL	Left-handed TP250 arm with a 90-degree adapter head, 0.36 kg (0.8 lb.)
TP250-ARM-AR	Right-handed TP250 arm with a 90-degree adapter head, 0.36 kg (0.8 lb.)
TP250-AUA16	Universal adapter, size 25x27x35 mm, opening 4-16 mm, 0.07 kg (0.15 lb.)
TP250-AVA60	Variable-angle adapter (45, 60, or 75 degree), 0.01 kg (0.05 lb.)
TP250ES01	Set includes 3 horizontal extenders (1", 2", 3") and 3 vertical extenders (10mm, 18mm, 25mm)
TP250-ABR45	45-degree bracket for TP250 Positioner, size 53 mm x 32 mm x 9 mm, 19 gm

TP250 ACCESSORIES



TP250 Probe arm can be adjusted for different orientations and positions without using any tool.



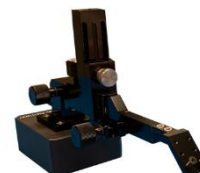
TP250ES01 extends the operating reach of the TP250 positioner.

TP250/TP150 COMPARISON



TP250LB

	TP250	TP150
Probe Compatibility	Microprobes & PacketMicro Probes	PacketMicro Probes
Probe Fixture Compatibility	All PacketMicro fixtures	Standalone only
Large XY control Knobs	Yes	No
Smooth XYZ adjustment	Excellent	Typical
Base Magnetic Lock	Yes	No
Accessories	Many	Few



TP150L

APPLICATIONS

LARGE PCB PROBING



Large-PCB Probe Station (HPS24)

HPS24 probe station is designed for probing large printed-circuit boards. It can be configured for 1-sided or 2-sided probing.

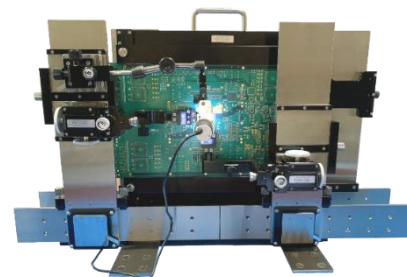
BENCHTOP RF PROBING



Horizontal probing of RF Module

This simple, easy-to-use probe station with probes are ideal for testing antennas, RF modules and PCBs.

2-SIDED PCB PROBING



2-Sided Probe Station (VPS10)

VPS10 probe station makes 2-sided probing easy and is designed for laboratories with limited space.